

SERIES GD X1 **AUTOMATIC GUILLOTINE CUTTER**



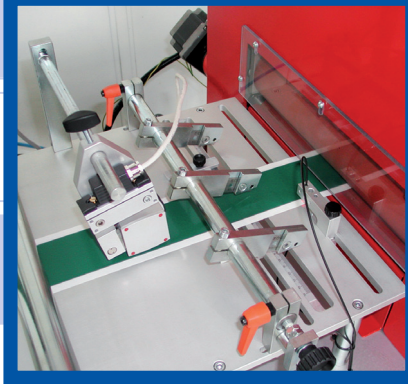
model full options

Guidolin Giroto s.r.l.

Tel. +39 0381 20698 Fax +39 0381 20998 Via Orta 27, 27029 Vigevano (PV) ITALY

www.guidolin.com e-mail: cutting.systems@guidolin.com

SERIES

GD X1

TL system: longitudinal cut with razor blades and adjustment on the axle.

Optical fibres photocell for a correct cutting positioning of printed or die-cut materials.
Incremental encoder for the exact feeding control.

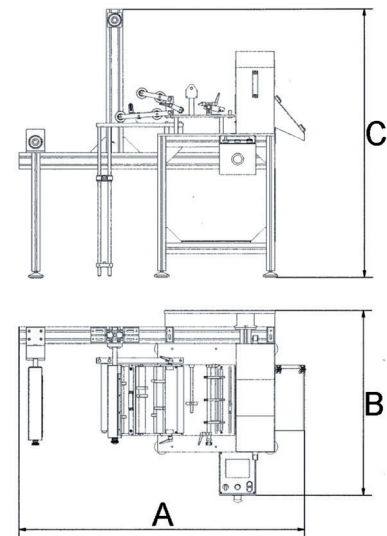
TECHNICAL DATA

Overall dimensions (AxBxC)

Dimensions and weights in accord with the composition of the machine and in accord with the web width

Voltage 220V-50Hz-1Ph+N+PE

Web width 300 and 600 mm



Control Panel with Touch Screen



OPTIONS

Unwind with motor-reducer with the photocell for the automatic unwinding of the material.

Friction unwind for the lamination.

Dancer on guides for keeping in tension the unwound material.

Chute in exit of the machine with frontal stop to stack cut pieces.

