



### Fustellatrici GD RO per materiali flessibili nei settori tecnici

#### Opzioni

Portabobina con freno controllato da sensore a ultrasuoni ● Sistema per controllo tensione materiale ● Guida nastro con controllo elettronico ● Svolgitore frizionato ● Gruppo di laminazione ● Svolgitore inferiore frizionato ● Riavvolgitore inferiore ● Riavvolgitore con racla per sfrido ● Gruppo di fustellatura con regolazione trasversale ● Gruppo di fustellatura con regolazione longitudinale ● Gruppo di fustellatura dal basso ● Taglio longitudinale a lame fisse ● Taglio longitudinale a lame e controlame ● Taglio longitudinale a pressione ● Barre ionizzanti ● Torretta luminosa ● Gruppo di trasporto ● Gruppo di impilamento automatico ● Dischi in policarbonato ● Alberi ad espansione ● Gruppo di aspirazione ● Carrello porta opzioni (per lo stoccaggio di gruppi)

### TECHNICAL DATA GD RO 175/250\* standard version

Dimensions	3100x550/620*x1750 mm
Weight	940/990* Kg
Power	400V 50Hz 3PH
Motor absorption	4,8 Kw 12A
Speed	0-100 meters/min
Max web width	175/250* mm



### Troqueladoras GD RO para materiales flexibles de sectores técnicos

#### Opciones

Portabobina con freno controlado por sensor de ultrasonidos ● Sistema para control de tensión del material ● Guía cinta con control electrónico ● Desbobinador friccionado ● Grupo de laminación ● Desbobinador inferior friccionado ● Rebobinador inferior ● Rebobinador del desecho ● Grupo de troquelado con regulación transversal ● Grupo de troquelado con regulación longitudinal ● Grupo de troquelado de abajo ● Corte longitudinal con cuchillas fijas ● Corte longitudinal con cuchillas y contra-cuchillas ● Corte longitudinal a presión ● Barra antiestática ● Torre luminosa ● Grupo de transporte ● Grupo de apilamiento automático ● Discos de policarbonato ● Rodillos de expansión ● Grupo de aspiración ● Carro porta-opcionales (para almacenar los grupos)



### GD RO Die cutting machines for flexible materials in technical sectors

#### Options

Unwind with brake controlled by an ultrasonic sensor ● Web tension control ● Guide material with electronic control ● Upper friction unwind ● Lamination group with rolls ● Lower friction unwind ● Lower motorized rewind ● Motorized rewind for waste ● Back cutting die with transversal regulation ● Back cutting die with longitudinal regulation ● Back cutting die to cut from above ● Longitudinal cut with fix blades ● Longitudinal cut with circular blades and counter blades ● Longitudinal cut with pressure rotary blades ● Ionogenic bars ● Luminous towe ● Conveyor feeder rolls ● Automatic stacking system ● Disks of polycarbonate ● Expansion shafts ● Vacuum aspirator group ● Options holder trolley (for the stockage of the systems)



### Stanzautomaten für vielseitig einsetzbare Klebestreifen

#### Optionen

Rollenhalter mit Bremse und Ultraschallsensorsteuerung ● Steuersystem Materialspannung ● Elektronisch gesteuerte Bandführung ● Gebremste Abwickleinrichtung ● Ausrollaggregat ● Untere gebremste Abwickleinrichtung ● Untere Aufwickleinrichtung ● Aufwickleinrichtung zur Trennung von Abfallmaterial ● Stanzaggregat mit Quereinstellung ● Stanzaggregat mit Längseinstellung ● Unteres Stanzaggregat ● Längsschnitt mit feststehenden Messern ● Längsschnitt mit Rotor- und Statormesser ● Längsdruckschnitt ● Lonisierstangen ● Leuchtsäule ● Transportaggregat ● Automatische Stapleinrichtung ● Polykarbonatscheiben ● Expansionswellen ● Absaugaggregat ● Zubehörwagen (als Ablage für Baugruppen)



### Découpeuses GD RO pour les matières flexibles dans les secteurs techniques

#### Options

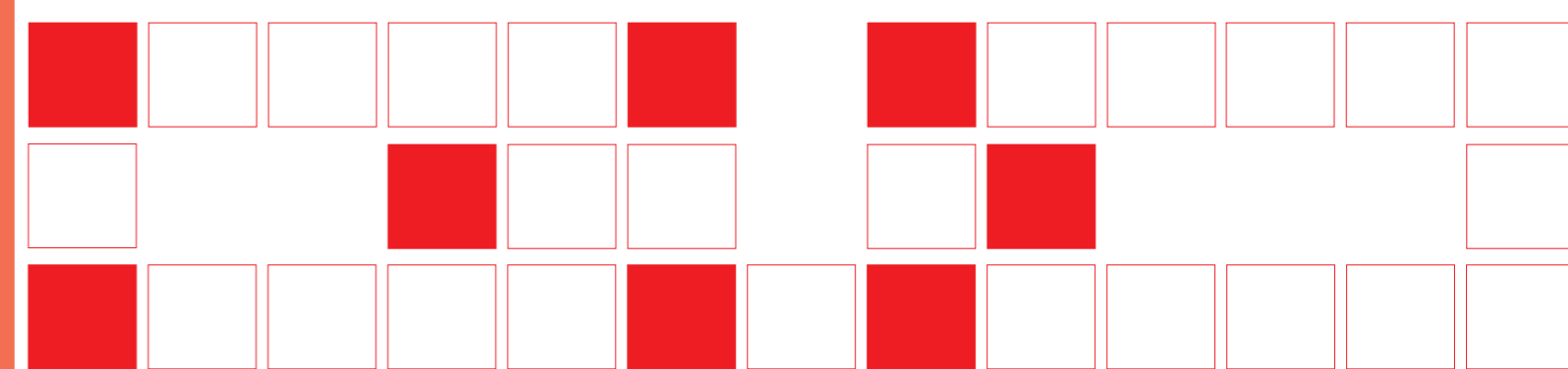
Dérouleur avec frein contrôlé par cellule ultrasonique ● Système pour contrôler la tension de la matière ● Guide matière avec control électronique ● Dérouleur friccionado ● Group de laminage ● Dérouleur inférieur friccionado ● Enrouleur inférieur ● Enrouleur pour échenillage ● Group de découpe avec réglage transversal ● Group de découpe avec réglage longitudinal ● Group de découpe par le bas ● Coupe longitudinale avec couteaux fixes ● Coupe longitudinale avec lames et contre lames ● Coupe longitudinale à pression ● Bars ionisantes ● Tourelle lumineuse ● Group de rouleaux pour avance matière ● Group pour empilement automatique ● Disques de polycarbonate ● Arbres à expansion ● Group de aspiration ● Chariot porte options (pour le stockage des groups)



### Машины для клеящих лент технического назначения

#### Дополнения

Бобинодержатель с тормозом, контролируемым ультразвуковым датчиком ● Система контроля натяжения ● Направляющая ленты с электронным контролем ● Фрикционный разматыватель ● Узел прокатки ● Нижний фрикционный разматыватель ● Нижний перематыватель ● Перематыватель с раблей ● Узел вырубки с поперечной регулировкой ● Узел вырубки с продольной регулировкой ● Узел вырубки снизу ● Продольный разрез зафиксированными ножами ● Продольный разрез ножом и контроножом ● Продольный разрез давлением ● Ионизирующие штанги ● Освещаемая башенка ● Узел транспортера ● Узел автоматического штабелирования ● Диски из поликарбоната ● Расширяющиеся валы ● Узел вытяжки ● Тележка с дополнительными устройствами (для складирования узлов)



# Quality and Design Made in Italy

▶ **AUTOMOTIVE**

▶ **CONVERTING**

▶ **AERO SPACE**

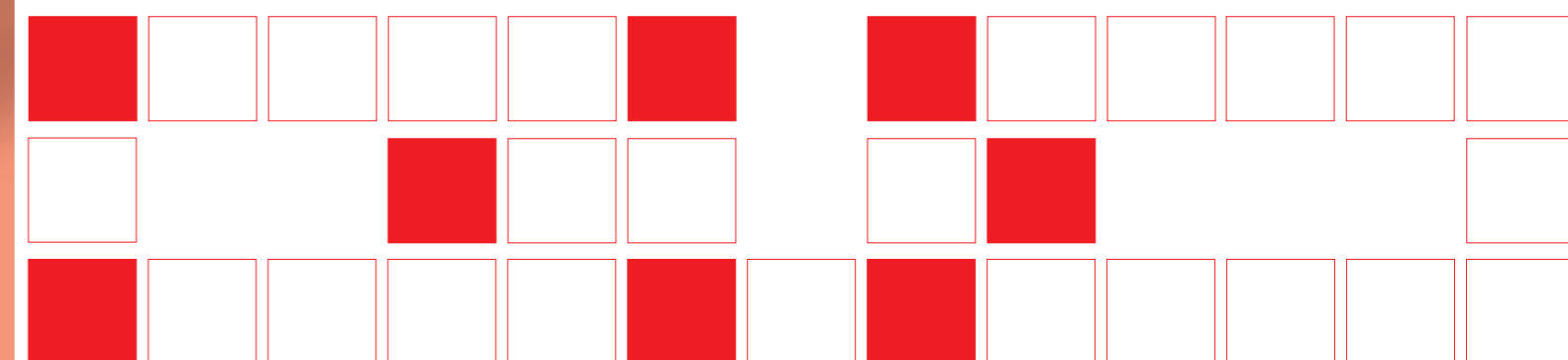
▶ **PACKAGING**

▶ **GASKET**

▶ **MEDICAL**

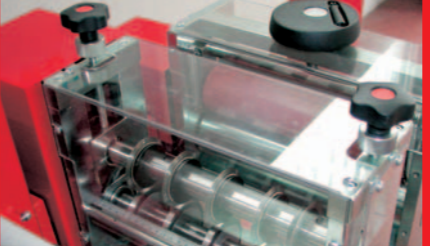
▶ **ELECTRONICS**

▶ **LABELS**



# Guidolin Girotto S.r.l.

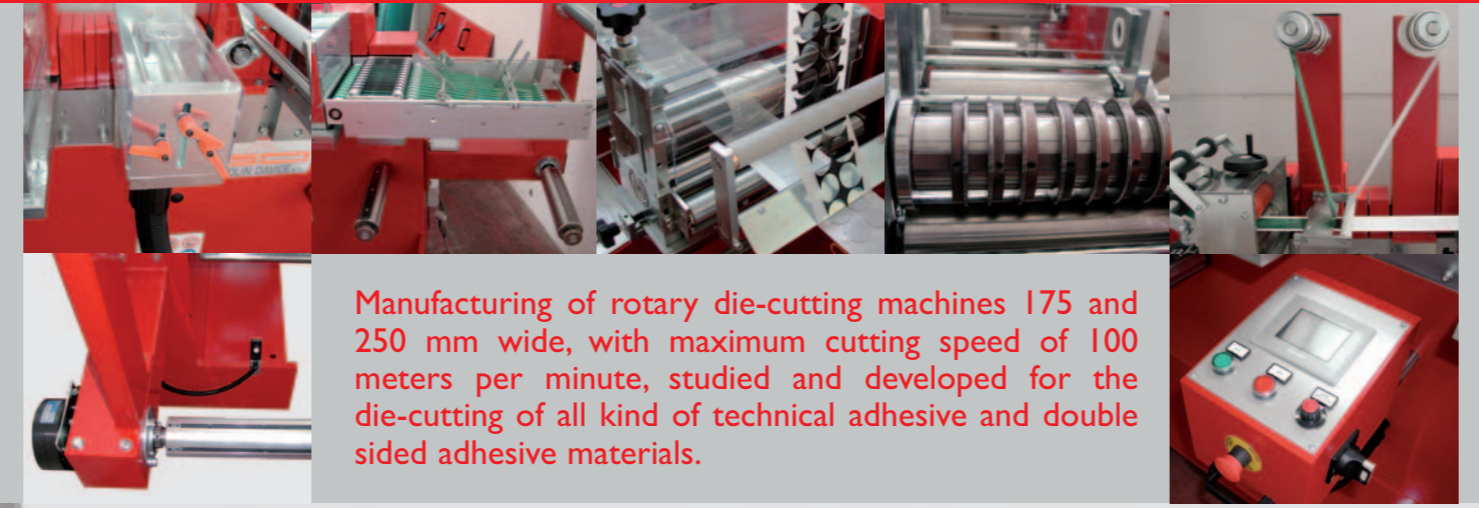
Leader company with more than 20 years of experience in die-cutting machines manufacturing.



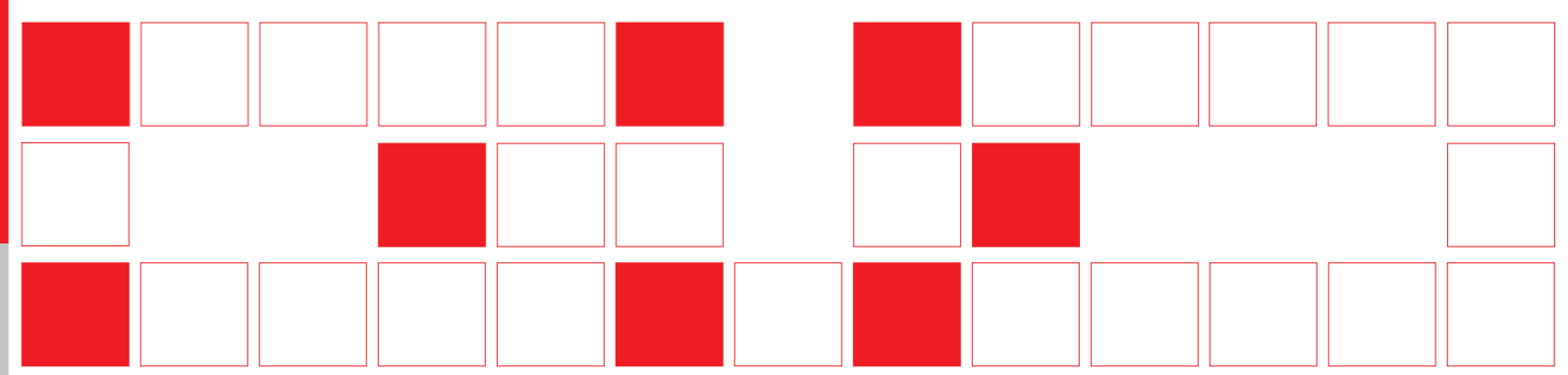
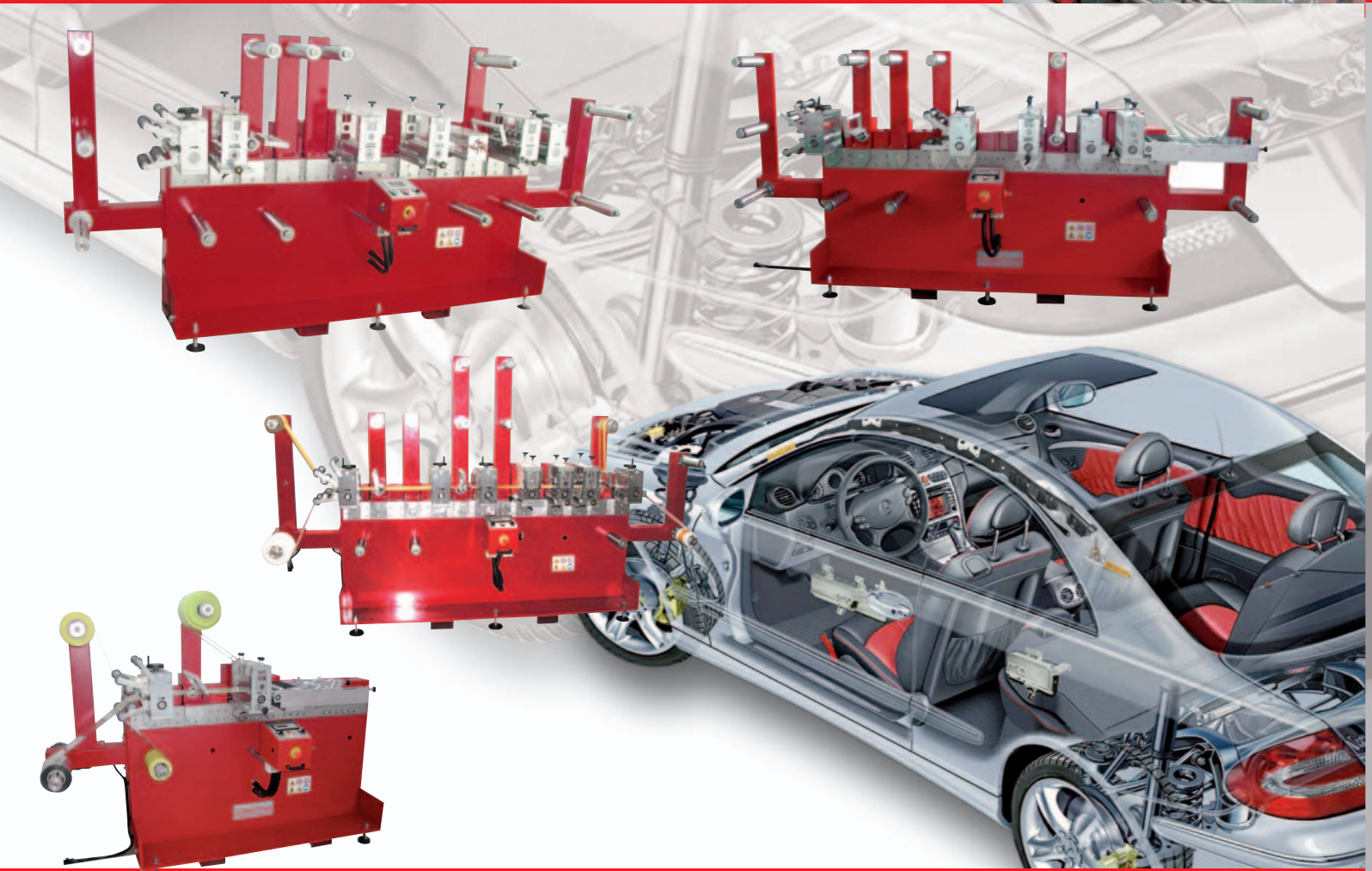
## Series GD RO rotary die-cutting machines

The most important converters in the world use our machines.

We design the machines for customer's special individual request.



Manufacturing of rotary die-cutting machines 175 and 250 mm wide, with maximum cutting speed of 100 meters per minute, studied and developed for the die-cutting of all kind of technical adhesive and double sided adhesive materials.



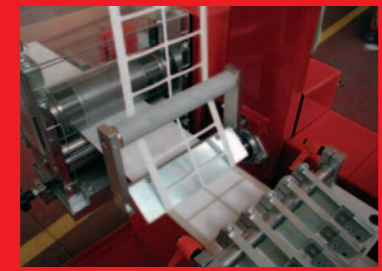
www.pubblitecnica.it

# Quality and Design Made in Italy

### Specialists in Cutting Systems rotary die cutting machines

### Series GD RO. ENTRY LEVEL

- Automotive
- Electronics
- Medical
- Packaging
- Gaskets
- Labels
- Double sided adhesive
- Foam materials
- Automotive materials
- Electronic materials
- Rubber
- Textile



I marchi sono di proprietà della casa madre e non possono essere utilizzati da altri.



The certainty of a top quality choice.



**Guidolin Girotto S.r.l.**  
Via Orta, 27 - 27029 Vigevano (PV) - Tel. + 39 0381.20698 - Fax + 39 0381.20998  
[www.guidolin.com](http://www.guidolin.com) - e-mail: [cutting.systems@guidolin.com](mailto:cutting.systems@guidolin.com)

